

ADVANCED COMPANY

Company Profile

Powering Digital Infrastructure. Enabling the Future.





WHO WE ARE

Advanced Company is a leading Saudi provider of ICT and digital infrastructure services, delivering integrated solutions across telecom, government, and enterprise sectors.

With a strong nationwide presence and a workforce of more than 1,000 professionals, the company combines field execution capability with advanced technical expertise to support mission-critical operations across the Kingdom.

Our Approach

Our approach is built on reliability, scalability, and operational excellence.

We work closely with our clients to design, deploy, operate, maintain and optimize their infrastructure environments, ensuring high performance, availability, and long-term value.

Our Strength

- Nationwide operational footprint across Saudi Arabia
- Strong relationships with telecom operators and government entities
- Large-scale workforce with multi-disciplinary expertise
- Proven track record in delivering complex, large-scale projects

Advanced Company at a Glance



1000+

Workforce Across
Saudi Arabia



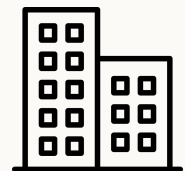
200+

Engineers



600+

Multi skilled
Technicians



22 MC

Kingdomwise



WHAT WE DO



INFRASTRUCTURE DEPLOYMENT SERVICES

End-to-end infrastructure deployment delivering reliable, scalable, and high-quality telecom and ICT services and solutions.



MANAGED SERVICES

Comprehensive managed services ensuring reliable, efficient, and continuous operation of critical ICT infrastructure.



CONNECTIVITY SOLUTIONS (VSAT & TELECOM NETWORKS)

Reliable and scalable connectivity solutions enabling secure communication across enterprise, remote, and mission-critical environments.



PROFESSIONAL & DIGITAL SERVICES

Advanced digital and consulting solutions enabling secure, scalable, and intelligent business transformation



DATA CENTER COLOCATION SERVICES

Secure and high-performance colocation solutions supporting critical workloads with reliability, scalability, and operational efficiency (Starting in Q2 2027)



FACILITY MANAGEMENT SERVICES

Integrated facility management solutions ensuring safe, efficient, and continuous operation of buildings and critical environments.



INFRASTRUCTURE DEPLOYMENT SERVICES

Advanced Company delivers comprehensive infrastructure deployment services that enable the development of resilient, scalable, and future-ready telecom and ICT networks.

With deep field expertise and strong execution capabilities, we manage the full lifecycle of infrastructure projects — from initial design and planning to deployment, integration, and final commissioning. Our approach ensures high-quality delivery, operational efficiency, and alignment with evolving digital and connectivity demands



WHAT WE DELIVER

- FTTX and fiber optic network deployment
- 4G / 5G telecom infrastructure implementation
- OSP (Outside Plant) and civil works
- Microwave transmission systems deployment
- Smart systems (IoT, CCTV, ELV solutions)
- Data center infrastructure setup
- MEP and construction



KEY FEATURES

- End-to-end deployment capabilities
- High-quality execution with industry standards
- Scalable and future-ready infrastructure
- Efficient project management and delivery
- Integration across multi-vendor environments

WHERE IT MATTERS

- Telecom network expansion projects
- Smart city and government initiatives
- Enterprise and industrial infrastructure
- Data center and digital infrastructure environments

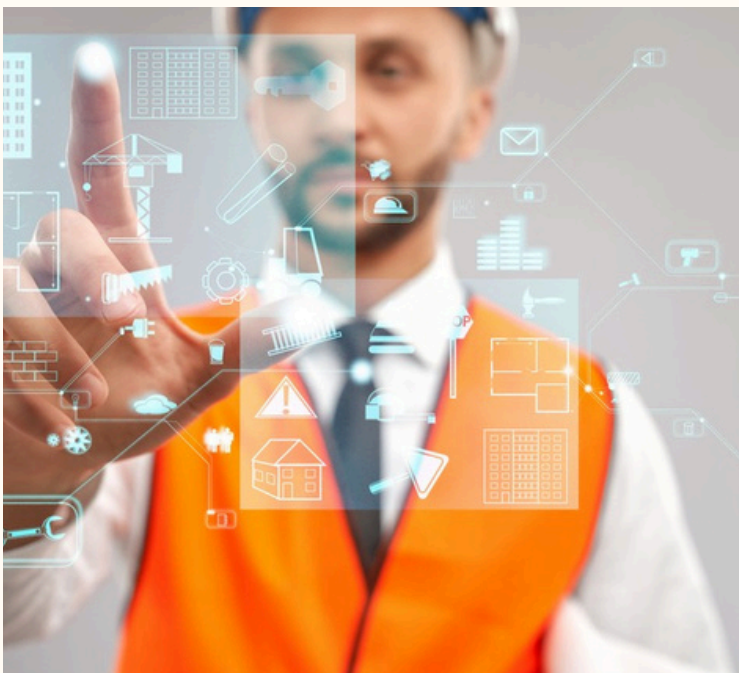


MANAGED SERVICES

Advanced Company provides comprehensive managed services designed to ensure the continuous, efficient, and reliable operation of telecom, ICT, and critical infrastructure environments.

Our service model combines advanced monitoring tools, skilled technical teams, and standardized processes to deliver high availability, optimized performance, and operational excellence.

We support clients across telecom, government, and enterprise sectors by managing complex infrastructure, reducing operational risks, and enabling long-term sustainability.



KEY FEATURES

- Continuous 24/7 monitoring and proactive support
- High system availability, uptime, and reliability
- Skilled workforce with multi-disciplinary expertise
- Standardized processes aligned with industry best practices (SLA-driven)
- Scalable service model supporting multi-site operations
- Integrated management across telecom, IT, and facility systems
- Data-driven insights for performance optimization and efficiency

WHAT WE DELIVER

- 24/7 Network Operations Center (NOC) monitoring and support
- Telecom network managed services (wireless, FTTX, OSP fiber, core networks)
- IT infrastructure management (servers, storage, cloud environments)
- Field operations & on-site maintenance services
- Electromechanical managed services
- Preventive & corrective maintenance programs
- Incident management and fault resolution services
- Performance monitoring, reporting, and optimization

WHERE IT MATTERS

- **Operational Efficiency**
Reducing downtime and improving system performance through proactive management
- **Cost Optimization**
Lowering operational costs by optimizing resource utilization and maintenance planning
- **Reliability & Continuity**
Ensuring uninterrupted operations for mission-critical infrastructure
- **Single Point of Accountability**
Providing integrated management across multiple technologies and vendors

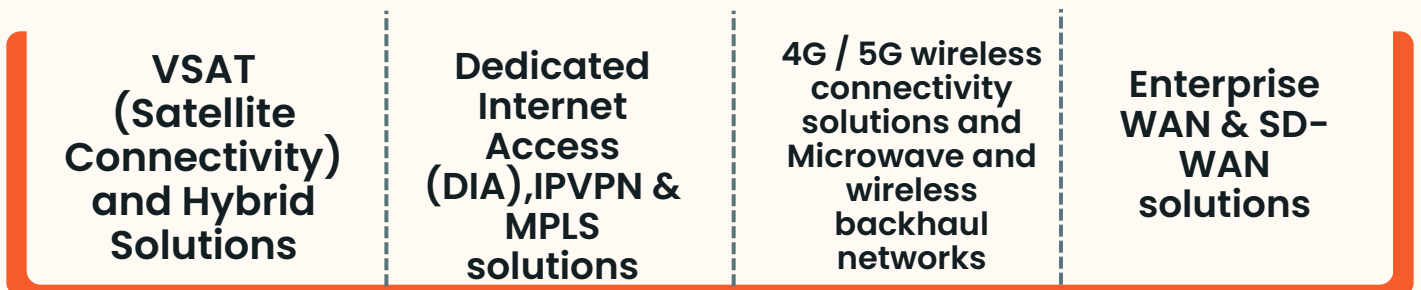


CONNECTIVITY SOLUTIONS

Advanced Company delivers secure, scalable, and high-performance connectivity solutions that enable seamless communication across enterprise, remote, and mission-critical environments.

By integrating satellite, wireless, and terrestrial network technologies, we provide reliable connectivity tailored to diverse operational requirements. Our solutions ensure business continuity, optimized performance, and secure data transmission across complex and geographically distributed environments.

WHAT WE DELIVER



KEY FEATURES

- High availability and reliable network performance
- Secure and encrypted data transmission across networks
- Scalable solutions supporting growing business demands
- Multi-technology integration (satellite, fiber, wireless, mobile)
- Optimized traffic management and network performance control
- Rapid deployment for remote and critical environments
- Flexible architecture tailored to enterprise and telecom needs

WHERE IT MATTERS

- 01/ Remote sites and geographically challenging locations
- 02/ Government and defense communication networks
- 03/ Enterprise multi-branch connectivity environments

HOW WE ADD VALUE

- | | | |
|---|--|--|
| <p>01/ Seamless Connectivity</p> <ul style="list-style-type: none"> • Ensuring uninterrupted communication across all locations | <p>02/ Business Continuity</p> <ul style="list-style-type: none"> • Providing reliable backup and redundancy solutions | <p>03/ Operational Flexibility</p> <ul style="list-style-type: none"> • Enabling rapid deployment in remote and challenging environments |
|---|--|--|



CONNECTIVITY ON THE MOVE (COTM)

Advanced Company offers next-generation connectivity-on-the-move (COTM) solutions powered by Kymeta's advanced flat-panel satellite technology. This capability enables continuous, high-speed communication for mobile assets operating across remote, urban, and mission-critical environments. Unlike traditional satellite systems, Kymeta solutions eliminate the need for mechanical tracking, allowing seamless and uninterrupted connectivity even while in motion. By leveraging multi-orbit satellite networks, we deliver reliable performance with enhanced flexibility and coverage.

“Seamless connectivity in motion — enabling operations anywhere, anytime.”





FACILITY MANAGEMENT SERVICES

Advanced Company provides integrated facility management services designed to ensure the efficient, safe, and reliable operation of buildings, infrastructure, and critical environments.

Our services combine technical expertise, operational excellence, and smart management solutions to maintain assets, optimize performance, and enhance the lifecycle of facilities. We support telecom sites, commercial properties, industrial facilities, and mission-critical environments across the Kingdom.



WHAT WE DELIVER

- **Hard services** including electrical, HVAC, and mechanical systems maintenance
- **Soft services** including cleaning, security coordination, and support services
- Telecom site facility management (shelters, towers, power systems)
- Electromechanical operations and maintenance
- Energy management and optimization services
- Preventive and corrective maintenance programs
- Asset management and lifecycle support

KEY FEATURES

- Integrated service delivery across multiple facility types
- Skilled workforce with technical and operational expertise
- Proactive maintenance ensuring high asset availability
- Compliance with safety and regulatory standards
- Scalable solutions for single-site and multi-site operations
- Data-driven monitoring and performance optimization

HOW WE ADD VALUE

- **Operational Efficiency**
Ensuring smooth day-to-day facility operations
- **Cost Optimization**
Reducing maintenance costs through proactive planning
- **Asset Longevity**
Extending the lifecycle of critical infrastructure and equipment
- **Reliability & Safety**
Maintaining high standards of safety, uptime, and compliance



DATA CENTER COLOCATION SERVICES

Advanced Company provides secure, scalable, and high-performance data center colocation solutions designed to support enterprise, cloud, and mission-critical digital workloads. Our facilities and services enable organizations to host, manage, and scale their IT infrastructure in a reliable and controlled environment, ensuring high availability, operational efficiency, and business continuity. We combine robust physical infrastructure with advanced operational support to meet the growing demands of modern digital ecosystems.

Our data center colocation services are scheduled to be operational in Q2 2027, and we are currently accepting advance bookings and strategic partnership engagements.

WHAT WE DELIVER

- Rack space and private hosting environments
- Enterprise colocation solutions tailored to business needs
- High-density infrastructure support for demanding workloads
- Power, cooling, and environmental management systems
- Physical infrastructure setup and integration
- Remote hands and on-site technical support services
- Secure access control and monitoring systems



KEY FEATURES

- High availability with redundant power and infrastructure systems
- Secure and controlled physical environment with multi-layer protection
- Scalable capacity to support business growth and expansion
- Optimized power and cooling efficiency for high-performance workloads
- 24/7 monitoring and operational support
- Designed to support enterprise, cloud, and AI-driven environments

HOW WE ADD VALUE

Business Continuity

Ensuring uninterrupted operations for critical applications and systems

Scalability & Flexibility

Allowing clients to expand infrastructure based on demand

Operational Efficiency

Reducing infrastructure management complexity and costs

Performance Optimization

Delivering reliable environments for high-density and data-intensive workloads

WHERE IT MATTERS

- Enterprise IT infrastructure and applications
- Cloud and hybrid deployment environments
- AI, data analytics, and high-performance computing workloads
- Financial services and mission-critical systems
- Telecom and digital infrastructure platforms



PROFESSIONAL & DIGITAL SERVICES

Advanced Company delivers comprehensive professional and digital services designed to support organizations in their digital transformation journey.

By combining advanced technologies with industry expertise, we enable businesses to modernize their IT environments, enhance security, and adopt scalable, future-ready solutions. Our services are tailored to help enterprises improve efficiency, optimize operations, and leverage data-driven insights for sustainable growth.

WHAT WE DELIVER

Cybersecurity services including risk management and compliance

Digital transformation consulting and strategy development

AI, data analytics, and automation solutions

Enterprise IT system integration and modernization

Business process optimization and technology advisory

Enterprise IT system integration and modernization

KEY FEATURES

- Scalable and flexible digital solutions tailored to business needs
- Data-driven insights enabling better decision-making
- Seamless integration across enterprise systems and platforms
- Future-ready technologies aligned with industry trends
- Agile and adaptable solutions supporting rapid transformation



HOW WE ADD VALUE

- **Digital Transformation Enablement**

Helping organizations transition to modern, technology-driven operations

- **Operational Efficiency**

Streamlining processes and improving overall productivity

- **Security & Risk Mitigation**

Protecting systems, data, and business continuity

- **Innovation & Growth**

Enabling adoption of advanced technologies such as AI and automation

WHERE IT MATTERS

- Enterprise IT and digital transformation programs
- Government digital initiatives and smart services
- Data-driven and analytics-focused organizations
- Cloud adoption and hybrid infrastructure environments
- Businesses seeking automation and process optimization



WHY ADVANCED COMPANY

In a rapidly evolving telecom and digital landscape, organizations require more than service providers, they need a partner who understands execution, adapts to complexity, and delivers with consistency.

Advanced Company brings together operational discipline, technical depth, and a forward-looking mindset to support critical infrastructure and long-term business growth.

Execution You Can Rely On

We focus on getting the job done, efficiently, accurately, and on time. Our strength lies in execution, ensuring that every project is delivered with consistency and control, even in complex environments.

Built on Practical Expertise

Our experience is not theoretical, it is built from real projects, real challenges, and real solutions delivered across telecom, infrastructure, and digital.

Adaptability in Dynamic Environments

We operate in fast-moving, high-demand sectors. Our teams are structured to adapt quickly, respond effectively, and maintain performance under changing conditions.

Partnership-Driven Approach

We operate in fast-moving, high-demand sectors. Our teams are structured to adapt quickly, respond effectively, and maintain performance under changing conditions.

“Driven by execution. Defined by reliability. Built for the future.”

WHAT THIS MEANS FOR OUR CLIENTS

- Confidence in delivery, even for complex and large-scale projects
- Faster execution with strong local support
- Reduced operational risks through experienced teams
- A long-term partner focused on performance, not just scope



OUR CERTIFICATION



ترخيص إلكتروني - رقم الترخيص: ٤٢-٤٠٥ - اسم الجهة المرخصة: شركة المتطورة للتشغيل والصيانة

ترخيص إلكتروني - رقم الترخيص: ٤٢-٤٠٤ - اسم الجهة المرخصة: شركة المتطورة للتشغيل والصيانة

تسجيل إلكتروني - رقم التسجيل: ٤٢-٩٠٤ - اسم الجهة المسجلة: شركة المتطورة للتشغيل والصيانة

تسجيل إلكتروني - رقم التسجيل: ٤٢-٩٠٤ - اسم الجهة المسجلة: شركة المتطورة للتشغيل والصيانة



OUR CLIENTS



وزارة التعليم
Ministry of Education



تطوير لتقنيات التعليم
Tatweer Educational Technologies

أرامكو السعودية
Saudi Aramco



stc



HUAWEI

ZTE



salam

زين
ZAIN

سابك
SABK



الشركة السعودية للكهرباء
Saudi Electricity Company
Diligently Serving You

مرافق
MARAFIQ



الكفاح للمقاولات
ALKIFAH CONTRACTING

cape



روابي القابضة
Rawabi Holding



سامكو
AUTOMOTIVE
DIVISION

المجدوعي
Almajdouie



مجموعة كابلات الريض
Rizdah Cable Group

بنك البلاد
Bank Albilad

مصرف الإنماء
alinma bank

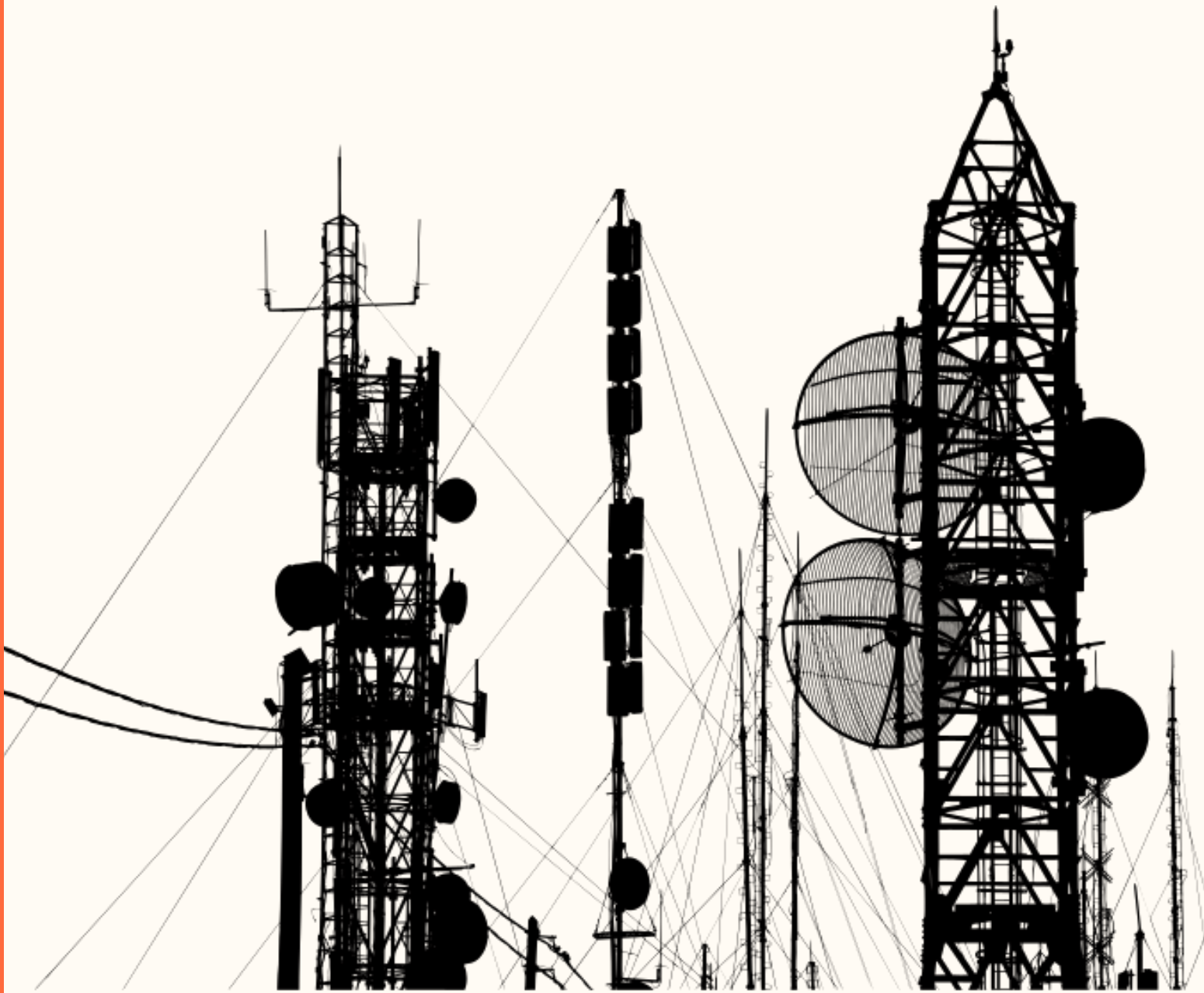
بنك الرياض
riyadh bank



البنك
السعودي
الفرنسي
Banque
Saudi
Fransi

IHG
InterContinental Hotels Group







**LET'S
BUILD THE
FUTURE
TOGETHER**

CONTACT US

Advanced Company
6937 Khalid Bin Al Walid,
Ghirnatah
Dist. Riyadh, 13242 – 2501

:www.advancedco.com.sa
:sales@advancedco.com.sa
: +966 59 300 3001



المتطورة
a d v a n c e d



المتطورة

a d v a n c e d